

TRIPLE BENEFITS

Triple Benefits of Traditional Agriculture



Sediment and nutrient pollution from degraded landscapes is one of the greatest threats to Hawai'i's coral reefs



90% of Hawai'i's food is imported



A'ole Pa'a ka 'Aina: Loss of cultural connection to the land

Solution: Traditional Agriculture Nourishing the Land, Sea and Community



Restores *ahupua'a* (watersheds) and promotes coral reef health

- Removes sediments and nutrients from stream water, absorbs floodwaters and prevents harmful pollutants from reaching coral reefs

Hawai'i State Commitments

Governor Ige has committed to effectively manage 30% of Hawai'i's nearshore ocean waters by 2030 ("30 by 30")



Provides greater food security and livelihoods for Hawai'i's People

- Enables the people of Hawai'i to produce food locally and be less reliant on imports
- Provides livelihoods through farming and associated markets

Hawai'i State Commitments

Governor Ige has committed to double local food production by 2020, provide loans for farmers, and make more land available for agriculture



Supports local culture and traditions

- Brings people back to the land and traditional crops like taro

Hawai'i State Commitments

Governor Ige has committed to honor, respect, and promote Hawaiian culture and sustainability



CORAL REEF ALLIANCE

The Coral Reef Alliance (CORAL) is an international conservation organization dedicated to uniting communities to save coral reefs.

Learn More and Follow Us



coral.org



maui@coral.org



[@CoralReefAlliance](https://www.facebook.com/CoralReefAlliance)



[@coral_org](https://twitter.com/coral_org)



[@Coral-Reef-Alliance](https://www.linkedin.com/company/Coral-Reef-Alliance)



[@coral_org](https://www.instagram.com/coral_org)

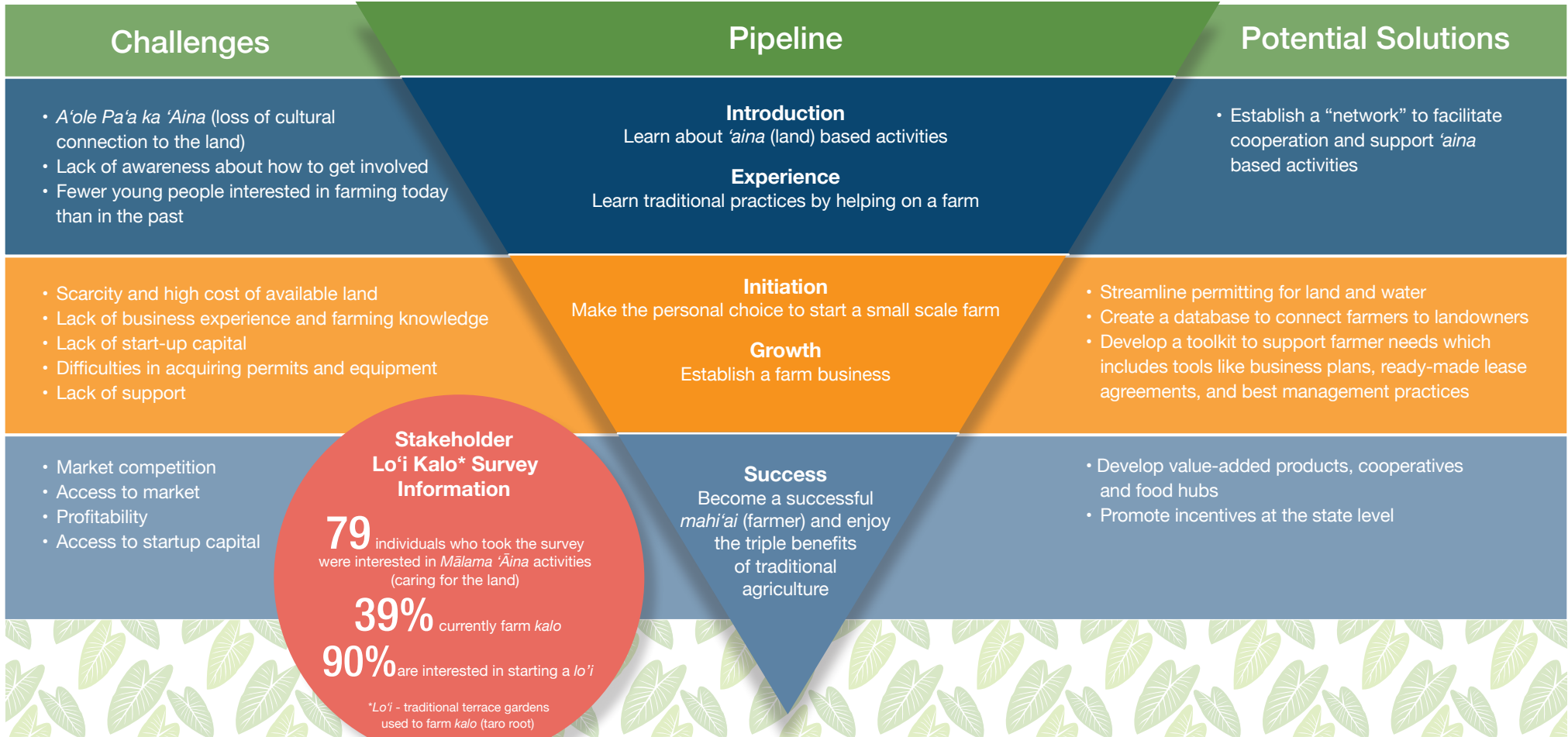
CORAL in Hawai'i

In Hawai'i, CORAL is working with partners to reduce land-based sources of pollution. One of our priority initiatives is to work with local stakeholders in West Maui to measure the efficacy of *lo'i* - traditional terrace gardens used to farm *kalo* (taro root) - at reducing nutrient and sediment pollution in streams.

STAKEHOLDER OUTREACH

Understanding Traditional Agriculture Through Stakeholder Outreach

Becoming a Traditional Farmer



CORAL REEF ALLIANCE

The Coral Reef Alliance (CORAL) is an international conservation organization dedicated to uniting communities to save coral reefs.

Learn More and Follow Us



coral.org



maui@coral.org



@CoralReefAlliance



@coral_org



@Coral-Reef-Alliance



@coral_org

CORAL in Hawai'i

In Hawai'i, CORAL is working with partners to reduce land-based sources of pollution. One of our priority initiatives is to work with local stakeholders in West Maui to measure the efficacy of *lo'i* - traditional terrace gardens used to farm *kalo* (taro root) - at reducing nutrient and sediment pollution in streams.